

# Differentiated Service Delivery and TB Preventive Treatment

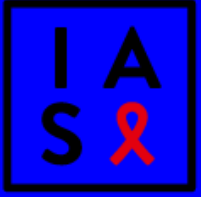


**ICAP**

Columbia University  
Mailman School  
of Public Health

# Outline

- **What is HIV differentiated service delivery (DSD)?**
- **What is the connection between DSD and TPT?**
- **What opportunities and challenges are posed by the COVID-19 pandemic?**



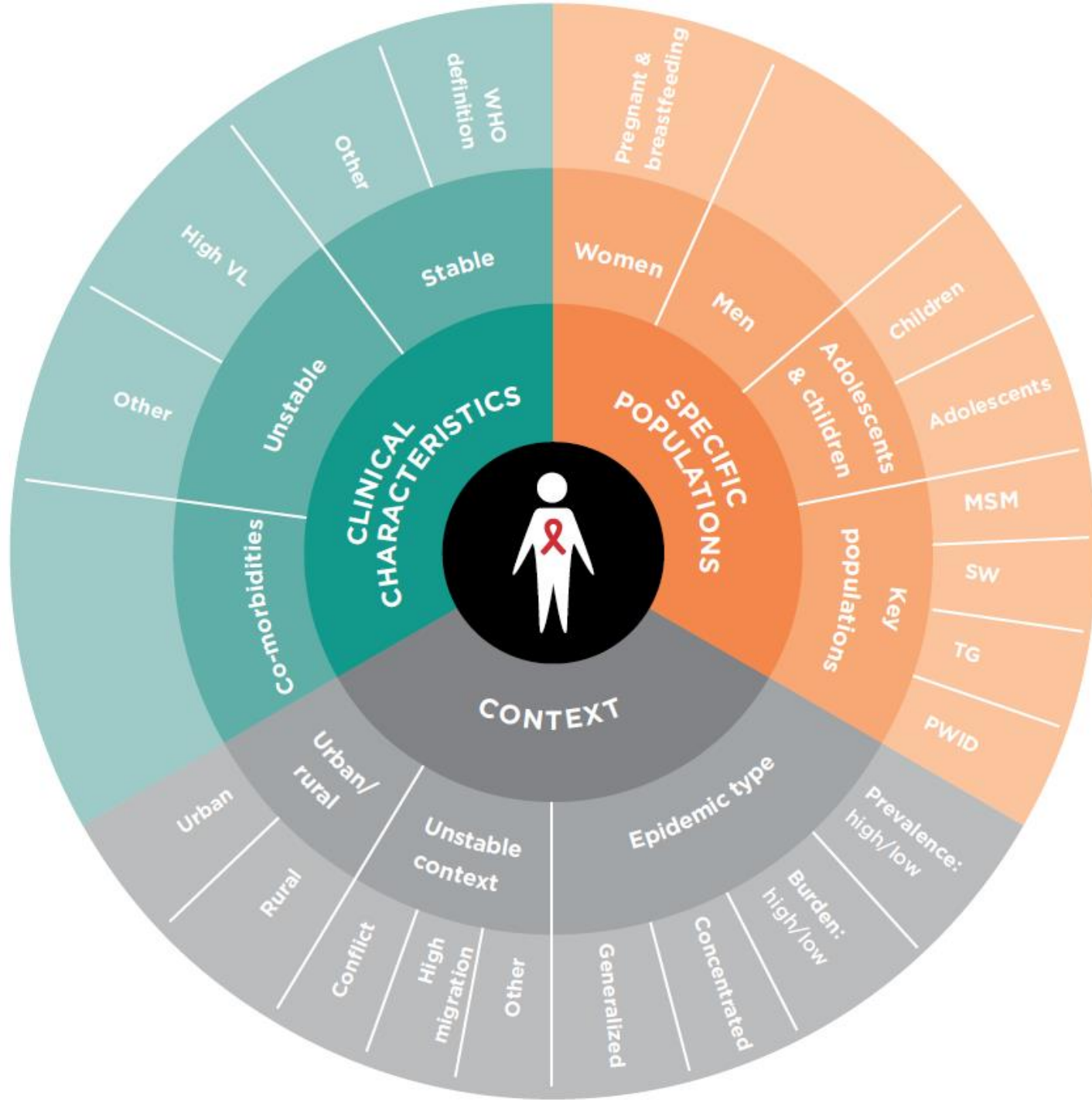
# Differentiated Service Delivery

is a client-centered approach that simplifies and adapts HIV services across the cascade to reflect the preferences and expectations of various groups of people living with HIV while reducing unnecessary burdens on the health system.

# Differentiated Service Delivery: The “how” not the “what”



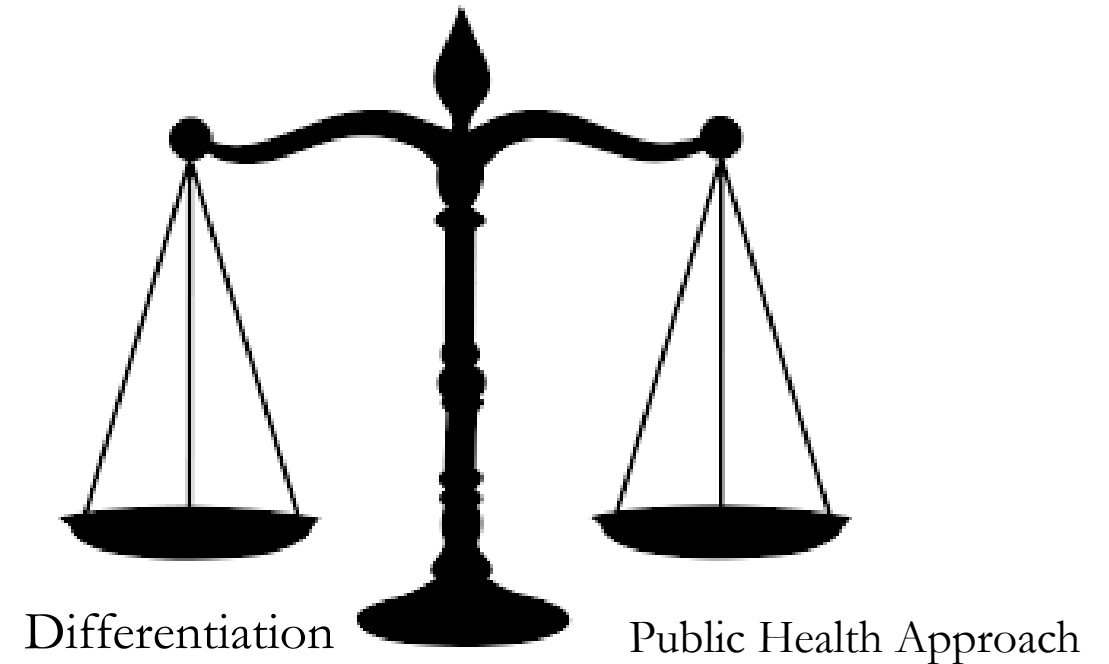
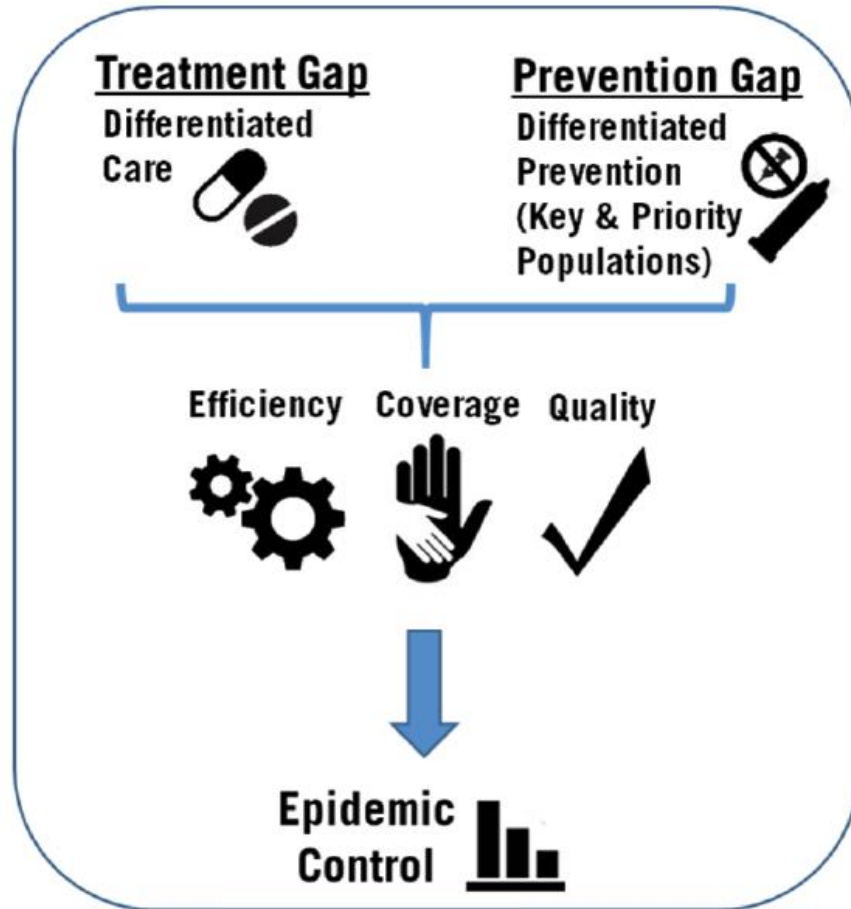
- Service Intensity
- Service Frequency
- Service Location
- Service Provider



# Differentiated ART Models

		WHO	
		INDIVIDUAL	GROUP
WHERE	FACILITY	<b>Facility-Based Individual Models</b> <ul style="list-style-type: none"><li>• Fast Track ART Refills</li><li>• Appointment Spacing</li><li>• Multi-Month Scripting and Dispensing</li></ul>	<b>Facility-Based Group Models</b> <ul style="list-style-type: none"><li>• Facility ART Refill Group</li><li>• Facility-Based Adherence Group</li><li>• Facility Teen Clubs</li></ul>
	COMMUNITY	<b>Community-Based Individual Models</b> <ul style="list-style-type: none"><li>• Community Drug Distribution</li><li>• Mobile Outreach (with or without ART Initiation)</li></ul>	<b>Community-Based Group Models</b> <ul style="list-style-type: none"><li>• Community ART Refill Group</li><li>• Community-Based Adherence Group</li><li>• Community Teen Clubs</li></ul>

# DSD is a means, not an end



El-Sadr, Harripersaud, Rabkin PLoS Med 2017

# The CQUIN Learning Network

- The HIV Coverage, Quality, and Impact Network is designed to advance differentiated service delivery
- Funded by the Bill & Melinda Gates Foundation
- Convened/led by ICAP at Columbia University
- Focused on the gap between policy and practice
- Aims to foster the scale-up of high quality DSD services to achieve epidemic control

# 19 Network Members as of September 2020

- Burundi
- Cameroon
- Cote d'Ivoire
- DRC
- Ethiopia
- Eswatini
- Ghana
- Kenya
- Liberia
- Malawi
- Mozambique
- Rwanda
- Senegal
- Sierra Leone
- South Africa
- Tanzania
- Uganda
- Zambia
- Zimbabwe





# CQUIN Workshop on Differentiated TB/HIV: March 2019


**HIV Differentiated Service Delivery**  
*Opportunities and Challenges for TB Prevention and Care*

**MEETING REPORT**  
*March 26-29, 2019*  
*Lusaka, Zambia*

*Hosted by the HIV Coverage, Quality, and Impact Network (CQUIN) and the World Health Organization*



 **ICAP**  
Columbia University  
Mailman School  
of Public Health

 **World Health Organization**

HIV LEARNING NETWORK  
The CQUIN Project for Differentiated Service Delivery

## Consensus among participants:

- Substantial opportunities to leverage DART models to enhance coverage and quality of ICF and TPT
- Some possible barriers, if programming, M&E and procurement are not aligned/adapted
- A co-created toolkit to support integration of ICF and TPT into emerging DART models would be extremely helpful

# CQUIN Differentiated TB/HIV Community of Practice

## Illustrative activities:

- **Framework document for integrating intensified case finding and TPT services into differentiated ART models**
- **Scan for tools and job aides (ongoing)**
- **Zambia project to integrate TPT into Fast Track**
- **Uganda project to assess TPT coverage in diverse DSD models**
- **Zimbabwe study of feasibility and acceptability of TPT in CARGs**
- **Zimbabwe study (in design phase) of integrating 3HP into Fast Track**

# Impact of COVID-19 on Global Health

## WIDER IMPACT OF COVID-19 PANDEMIC ON GLOBAL HEALTH

1.4 million additional  
TB deaths by 2025

**Tuberculosis**



**HIV**

673,000 additional  
HIV-related deaths in  
Africa in 2020

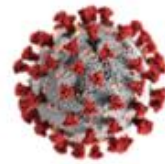
382,000 additional  
malaria deaths in 2020

**Malaria**



**Maternal & Child Health**

2.3 million child deaths  
and 113,000 maternal  
deaths over 12 months



80 million children at risk of  
vaccine-preventable diseases

**Routine Immunisation**



**Non-Communicable Diseases**

Cancer treatment  
disrupted in 42% of  
countries

Up to 15 million unintended  
pregnancies

**Reproductive Health**



**Poverty**

Deepest global recession  
since  
World War II

# COVID-19

## CQUIN scan in April/May 2020

- Within two months of the outbreak, 11 of 14 countries scanned had enabled multi-month prescribing for TPT in response to COVID-19
- Can DSD foster program resilience in the face of the pandemic and future shocks?



# THANK YOU