

Improving linkage to ART through differentiated ART service delivery for female sex workers: Experiences from the FHI 360 LINKAGES project in MALAWI

Grace Kumwenda- Program Manager

Pakachere IHDC, MALAWI

Dec. 4, 2017

ICASA 2017



USAID
FROM THE AMERICAN PEOPLE



PEPFAR
U.S. President's Emergency Plan for AIDS Relief

fhi360
THE SCIENCE OF IMPROVING LIVES

LINKAGES
Across the Continuum of HIV
Services for Key Populations

Presentation Outline

- Background
- Overview of LINKAGES project
- Differentiated service delivery models
- Program achievement
- Lessons

Key Populations and HIV in Malawi

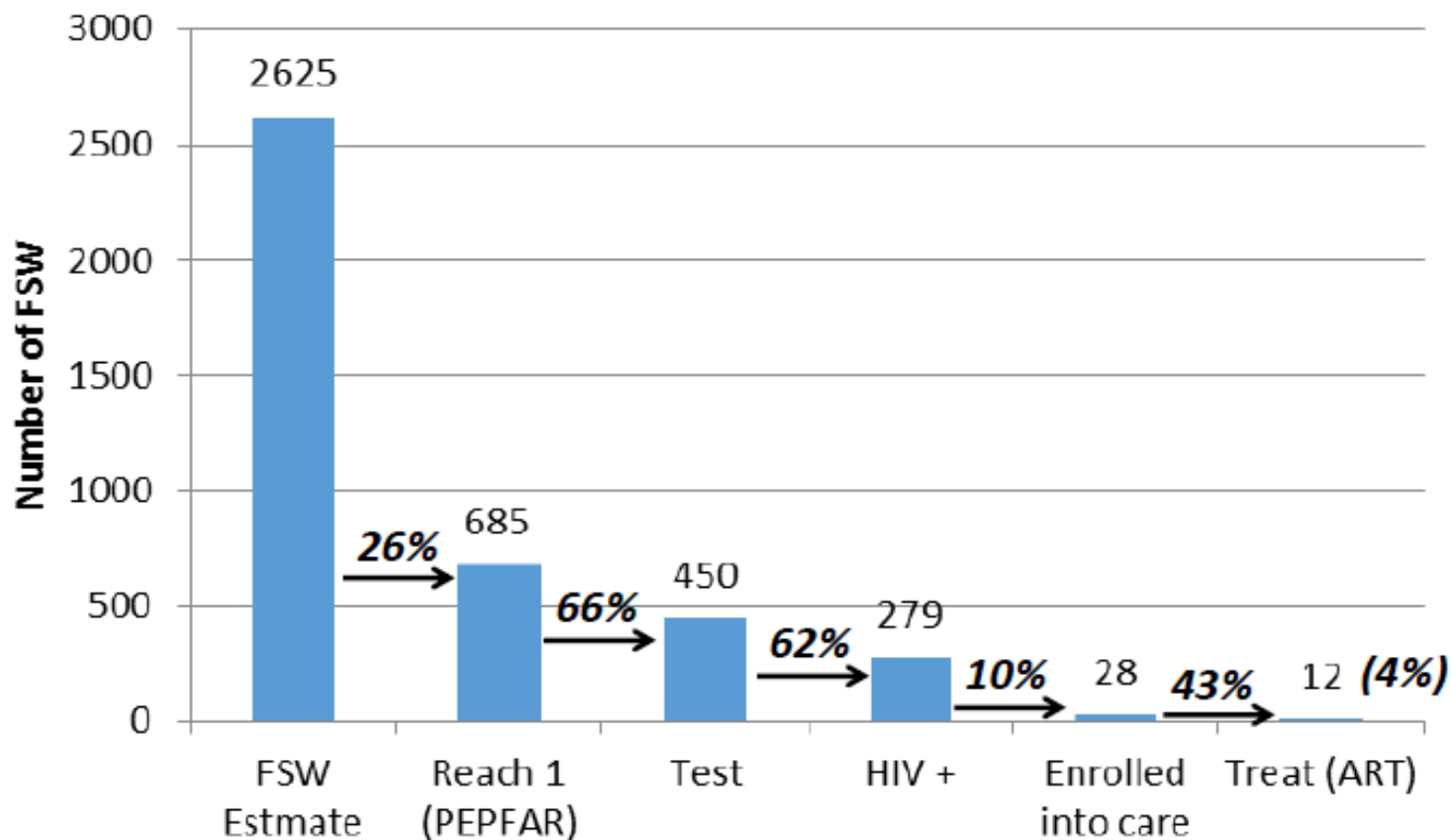
- Very high burden of HIV among KPs in Malawi
 - FSW - 62.7%
 - MSM - 17.5%
 - General population - 8.8%
- KPs have poor access to HIV prevention, care and treatment services due to high level of stigma & discrimination and the non-friendly legal environment



Overview of LINKAGES Project

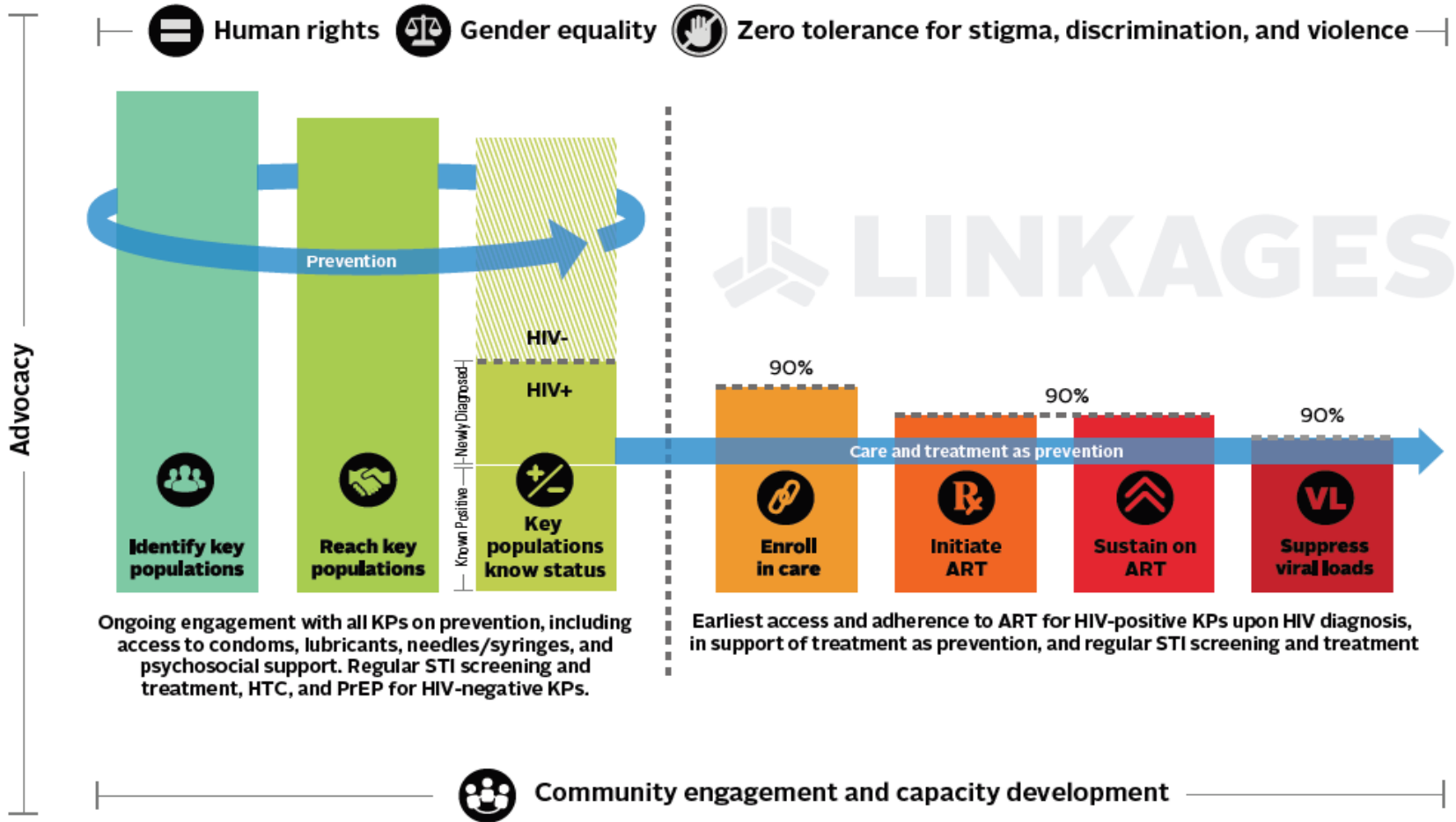
- PEPFAR/USAID-funded 5 Year project led by FHI 360
- Aims to reduce HIV transmission among KPs and improve the quality of life of KPLHIV by accelerating ability of Government and CSOs to deliver high quality services for KPs including addressing structural barriers
- Implementing in 6 districts in Malawi
- The Malawi HIV Strategic Plan and Malawi National Prevention Strategy – 2015 to 2020:
 - Acknowledges high HIV prevalence among KPs (FSW & MSM) and recommends special focus on this group
 - Thus, LINKAGES is supplementing national efforts to promote HIV services for KPs

HIV Cascade for FSWs prior to Implementation of LINKAGES Project



Based on results from a joint PEPFAR/GFATM Cascade Assessment conducted in Malawi in Feb. 2016

ENABLING ENVIRONMENT



Differentiated care model - its rationale

- Patients are provided with services through arrangements that work better for their respective groups
- Decompresses burden on health services at traditional health care facilities
- Offers additional convenient options for ART delivery tailored to specific needs of KPs
- The mainstay of differentiated ART delivery model for LINKAGES Malawi is drop in centre (fed through KP outreach delivery services)

Package of Services



	Package of Services
All KP	<ul style="list-style-type: none">• Prevention messages• Condoms and lubricant• HIV testing• STI screening• TB screening• Reduction of stigma and discrimination• GBV screening• Violence/crisis response team• Psychosocial counseling
FSW only	<ul style="list-style-type: none">• Family planning services• PMTCT
HIV Positive KP	<ul style="list-style-type: none">• Links to ART• Links to VL testing• KPLHIV support groups

Implementation



LINKAGES Service Delivery Models

- Clinical outreach



- Static clinics



- Hybrid facilities

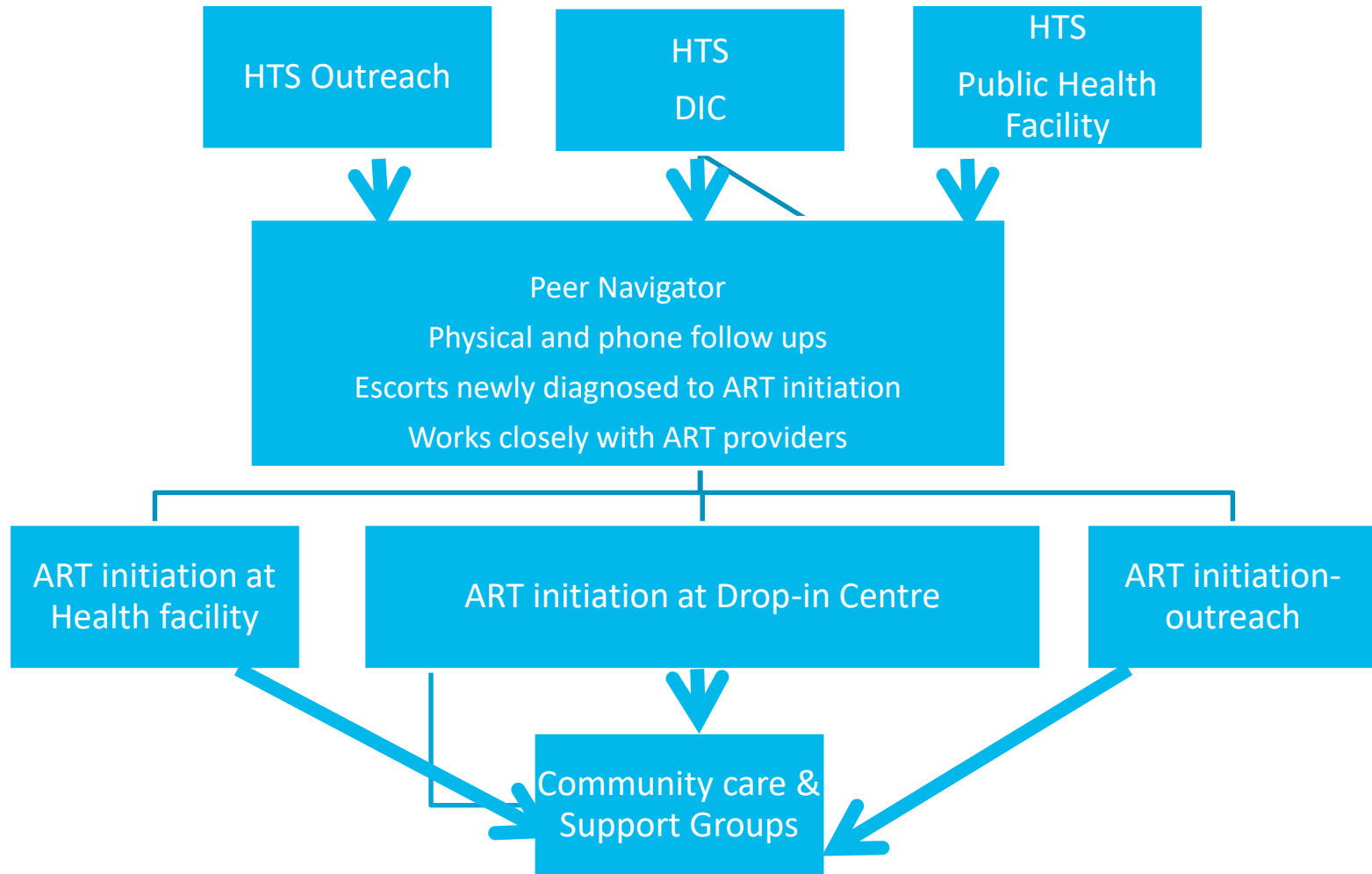


- Rolled out ART services in five DICs as an outreach site for the existing health facilities. Negotiations to increase DIC ART coverage underway.
- Collaborated with partners to facilitate viral load testing.

Differentiated ART service delivery: Our key considerations

- Place
 - convenient
 - friendly
- Time
 - test & treat
 - initiate at facility of preference
 - plan ART outreach based on KP needs in safe spaces
- Community Support
 - KPs living with HIV trained to support peers
 - confidentiality is key

Differentiated ART service delivery Triage

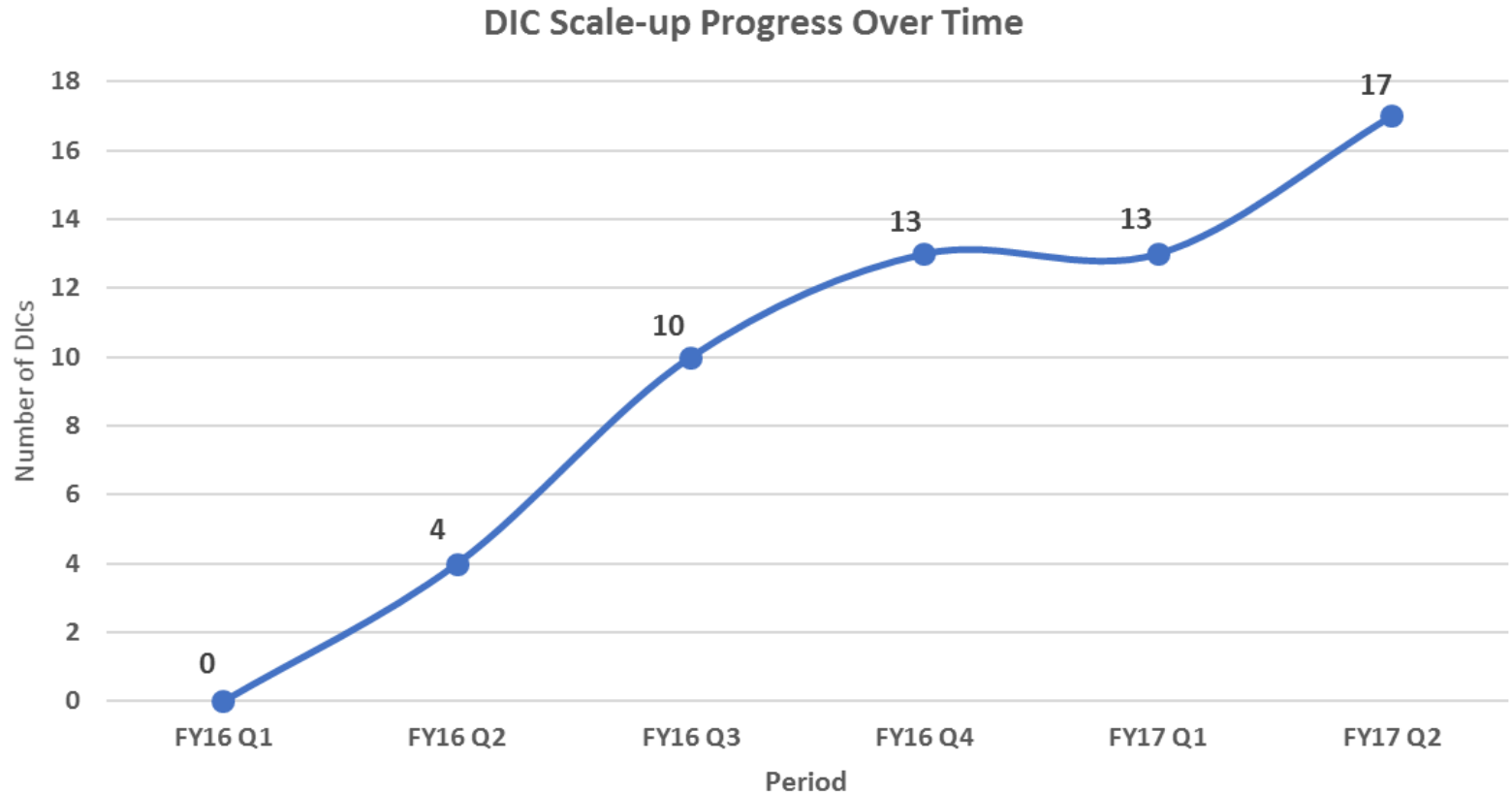


Achievements in FY17



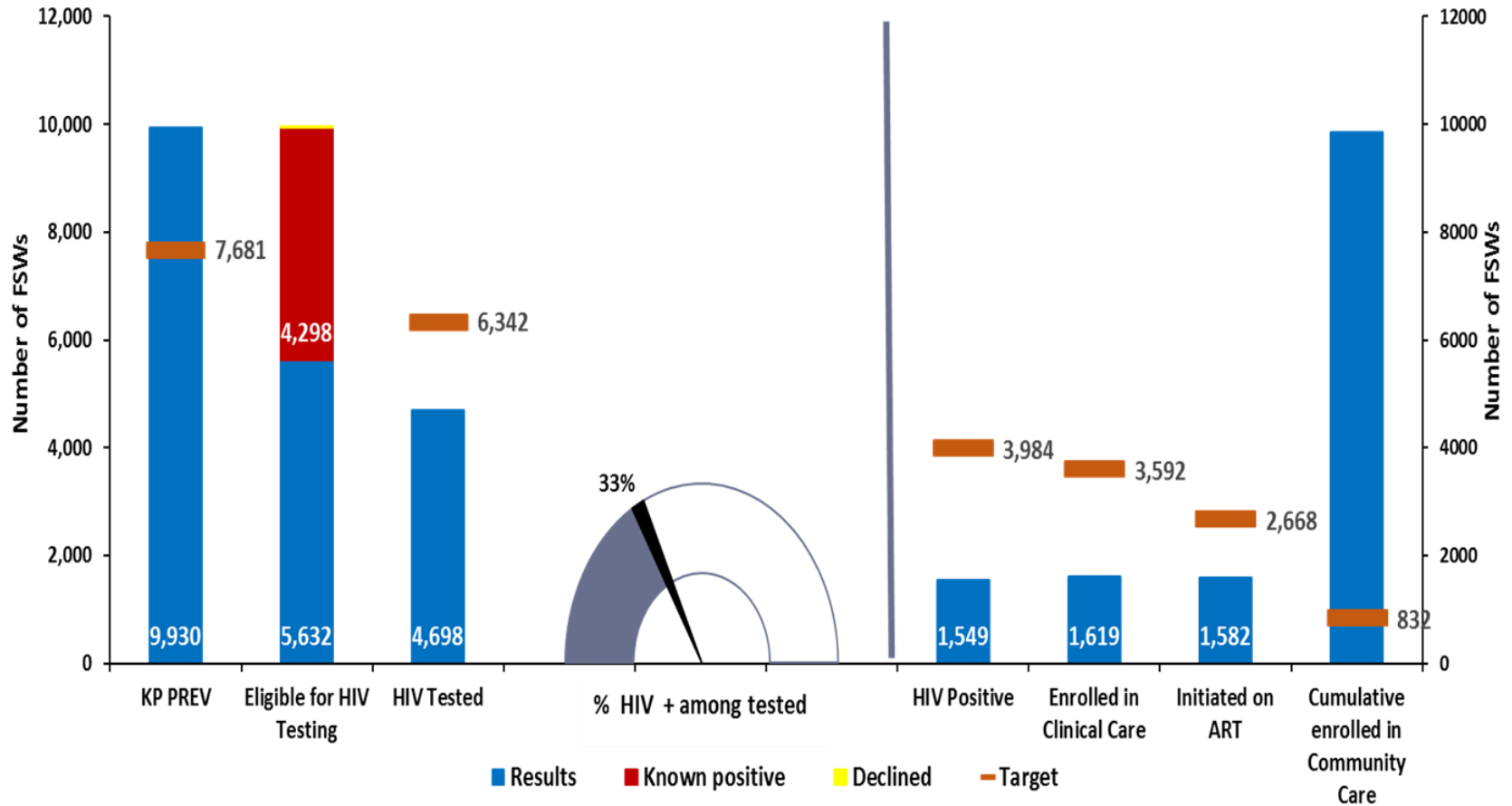
Scale of DICs as the mainstay of ART delivery

17 DICs (13 for FSWs and 4 for MSM) to create a safe space for KPs and provide KP-friendly services



Cumulative HIV Cascade for FSWs - FY17

FY17 Cumulative - Cross-sectional – FSW Cascade for Six Districts





Key Lessons: What has
worked very well

ART Services at Drop in Centers

1



Cohorts Tracking System

2

HIV
Negative

Quarterly HTS; SRH services
Cohort Tracker offers reminders for
the next date for re-test

HIV
Positive

Cohort Tracker offers
reminders for follow
up to enrolment and
initiation on
treatment

Peer Support and Strengthened Referral system

3



Plan for ensuring retention

- Strengthen peer navigation
- Partnership and collaboration with Light House and DREAM (centres of excellence for viral load) to support viral load monitoring
- Scale up and mentorship of community support interventions such as support groups
- Strengthening systems of managing HIV positive cohort data

Special Thanks

- Government of Malawi
- NAC
- Pakachere IHDC
- FPAM
- YONECO
- CEDEP
- FHI 360-Malawi
- Dr. Melchiade Ruberintwari
- Dr. G. Kamanga
- Louis Banda

Acknowledgments

