



Community-based differentiated ART delivery for men who have sex with men (MSM) and female sex workers (FSW) in Cameroon



ICASA 2019

Angumua Carrine, MPH

Continuum of HIV/AIDS prevention, care and treatment for Most-at-risk Populations (CHAMP)

CARE Cameroon
4 December 2019



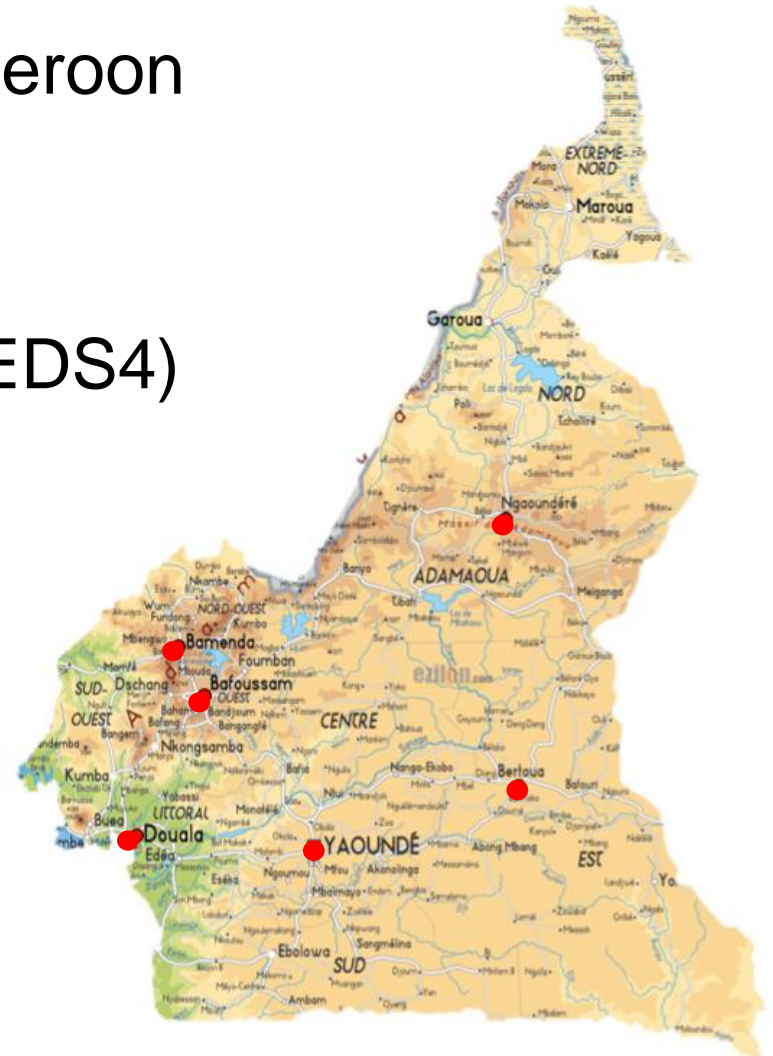


HIV in Cameroon

Adult prevalence (15-49): 2.7% (EDS4)

FSW prevalence: 24.5%

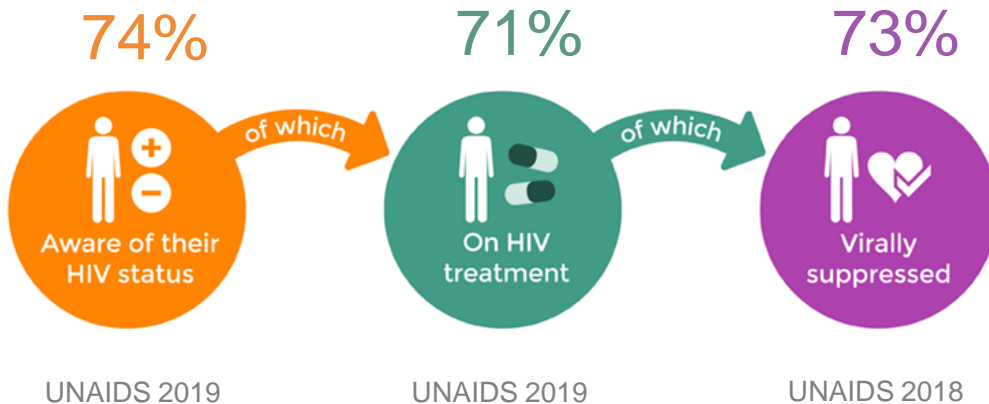
MSM prevalence: 20.7%



● FY20 districts (CHAMP)

Surface area: 475,650 km²

Population: 23.7M (2018)





Challenges/barriers to access HIV services

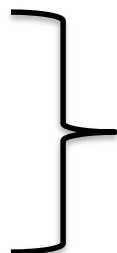
- Long waits
- User fees
- Stigma
- Violence
- Mobility





Focus populations for differentiated service delivery models (DSDM)

MSM
FSW

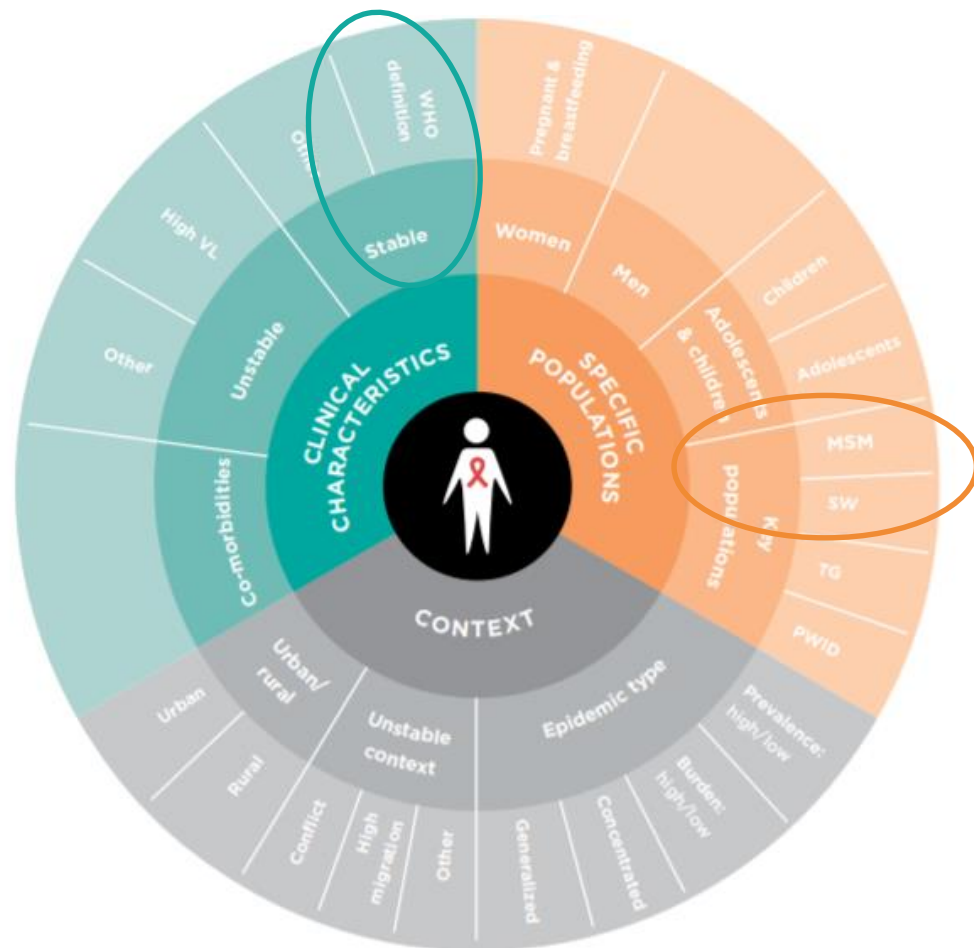


Bamenda
Douala
Yaoundé

(FY19 focus regions)

Stable clients:

- Newly diagnosed w/2 consecutive suppressed VL in first 12 months
- Prev. diagnosed & most recent VL suppressed





Client intervention preference

COMMUNITY/FACILITY PROVIDERS

FACILITY-BASED PROVIDERS

Drop-in Center



- **Motivational counseling**
- **Life steps adherence counseling**
- **Appointment reminders**
- STI diagnosis/tx
- Lab diagnostics
- Community ART dispensation
- Referral (SRMH/FP, legal, etc.)
- Nutrition
- Violence prevention & response

Peer Navigator

Psychos. Counselor

Expert Medical Volunteer

Clinical Facilities



- Care and tx



Focal point



Vision: client-managed group model

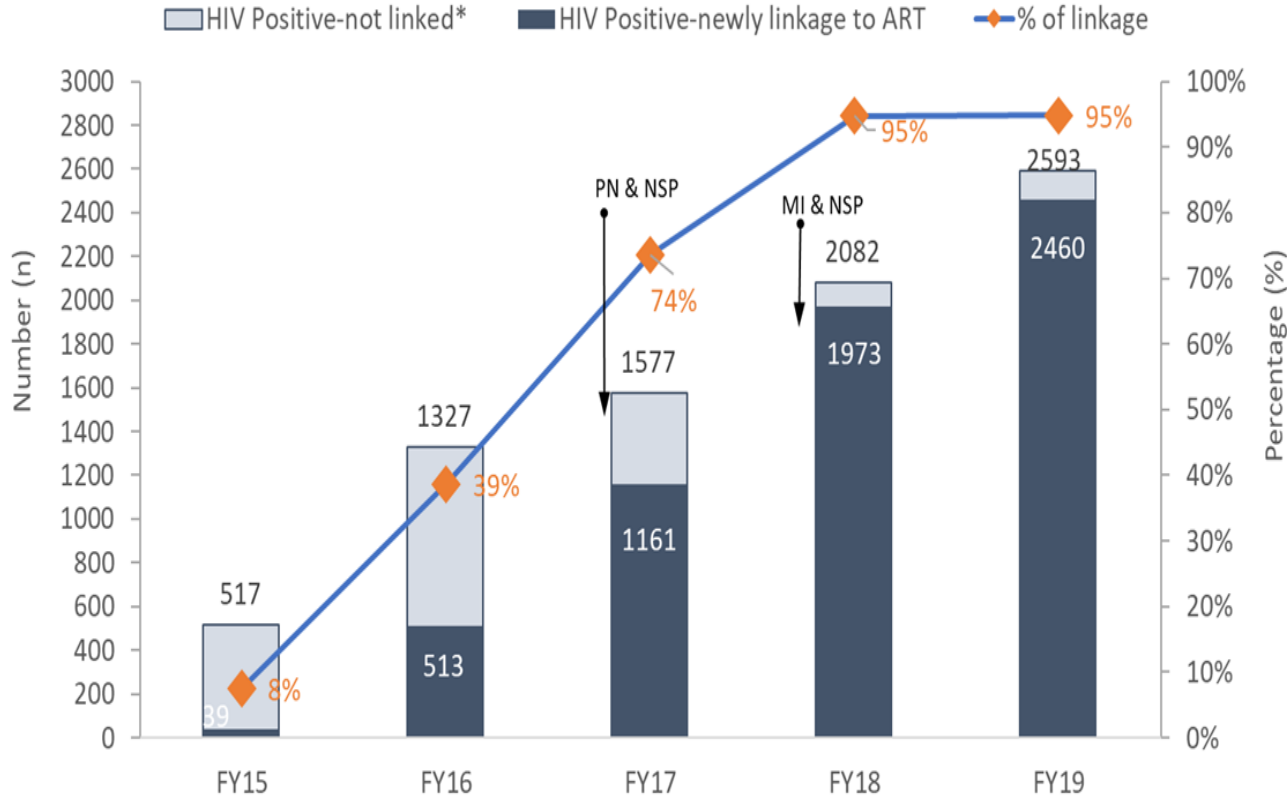


Building blocks: DSDM for *stable* MSM and FSW

	ART refills	Clinical consultation	Psychosocial support
WHEN	3 months	3 months	Each month
WHERE	Community	Health facilities	Community
WHO	Psychosocial counsellor/ Peer navigator	Physician	Psychosocial counsellor/Peer navigator
WHAT	ART drugs, peer psychosocial support, peer adherence monitoring	STI screen/tx, nutrition counselling, TB screening, SRHR, labs, adherence counselling	Group talks, home/hospital visits, counselling, violence prevention & response



Linkage (FY15-19)



* 'not linked' is the difference between the number of individual diagnosed with HIV and the number of individuals linked to ART during the

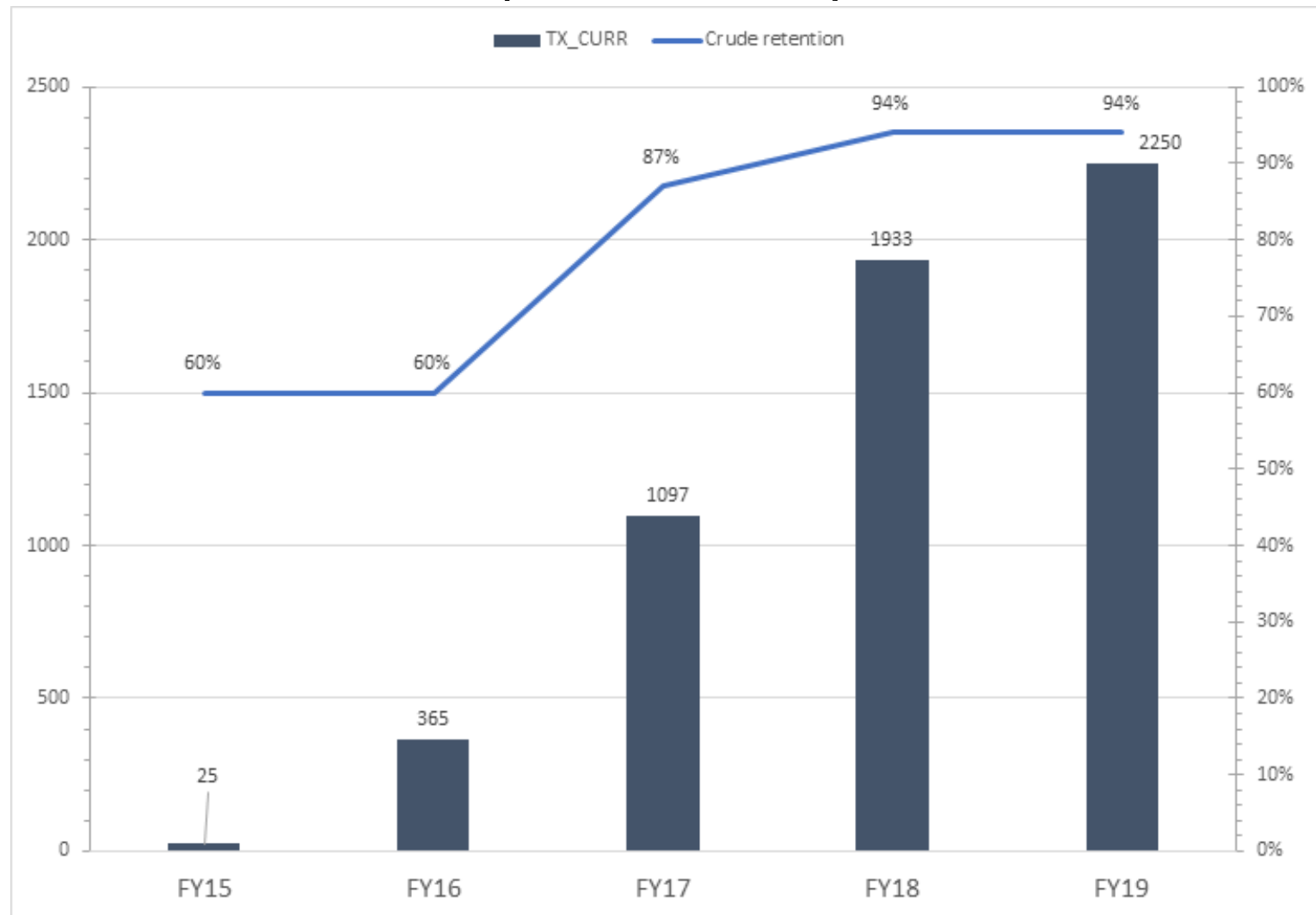
↑ Improved linkage

Key factors:

- Updated national policies and guidelines (i.e. NSP)
- Peer navigation (PN)
- Motivational interviewing (MI)



Crude yearly retention rates (FY15-19)





Lessons learned

Scale up

- Peer navigation
- Community dispensation of ART

Institutionalize

- Collaboration between community-based & national health system
- Motivational counseling
- Facility-level stigma mitigation interventions

