



IAS 2019



10TH IAS CONFERENCE ON HIV SCIENCE

Mexico City, Mexico  21-24 July 2019



IAS 2019

10TH IAS CONFERENCE ON HIV SCIENCE
Mexico City, Mexico 21-24 July 2019

Peer providers to support linkage from HIV self-testing to ART initiation in Burundi

Dismas Gashobotse, MD

FHI 360/LINKAGES, Burundi

“Sticky Linkage”: Latest evidence and strategies satellite

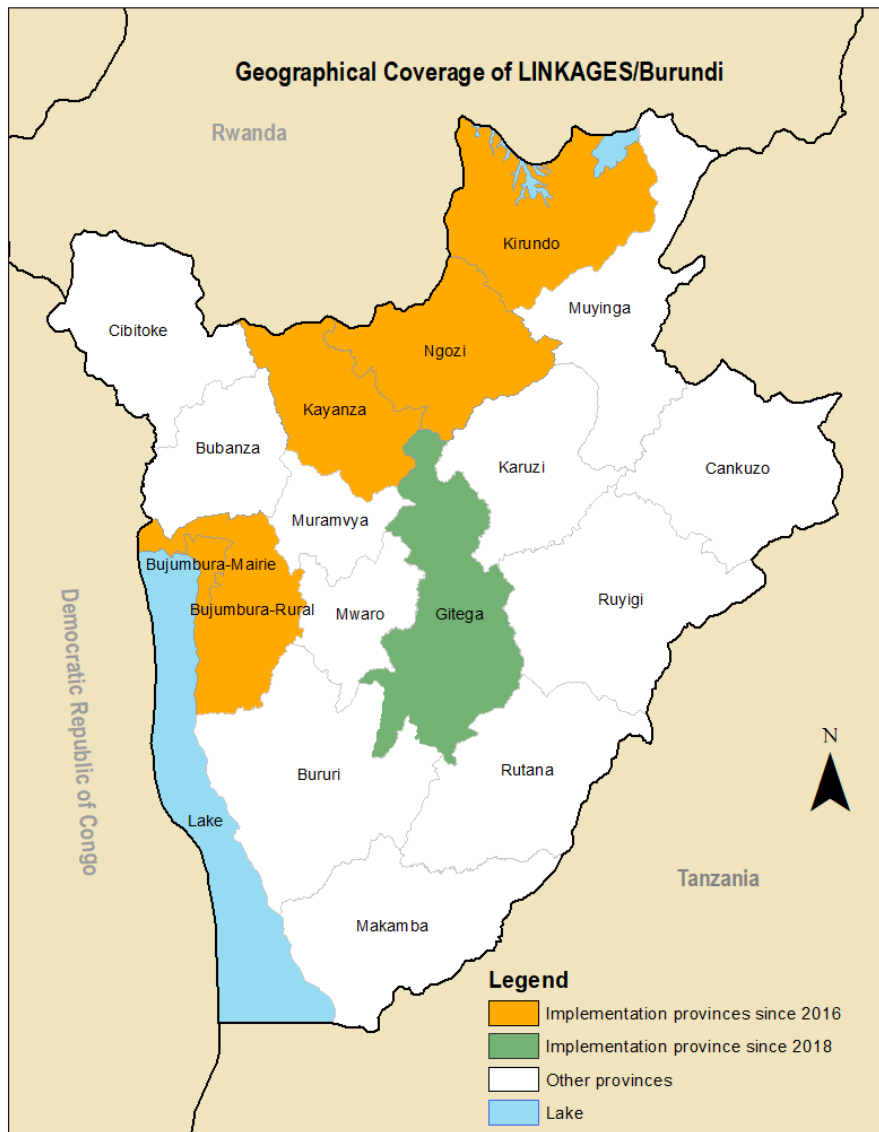
21 July 2019



#IAS2019 | @IAS_CONFERENCE | WWW.IAS2019.ORG

Background – LINKAGES Burundi

- Working to address HIV needs of key populations (KPs) – men who have sex with men (MSM) and female sex workers (FSWs) – in five provinces of Burundi since August 2016
 - Sixth province added in 2018
- Peer educators (PEs) and peer navigators (PNs) are an important pillar in the project’s implementation at the community level



HIV self-testing (HIVST) in Burundi

- HIVST adopted in Burundi's national guidelines in 2016
- LINKAGES began implementing directly assisted HIVST with KP peer staff using OraQuick in June 2018
 - PEs/PNs selected to assist with HIVST
 - HCWs (doctors, nurses, counsellors, lab technicians) and PEs/PNs trained on how to perform and interpret HIVST; PEs/PNs given extra training on pre- and post-test counselling
 - MOUs about keeping confidentiality were signed by PEs/PNs

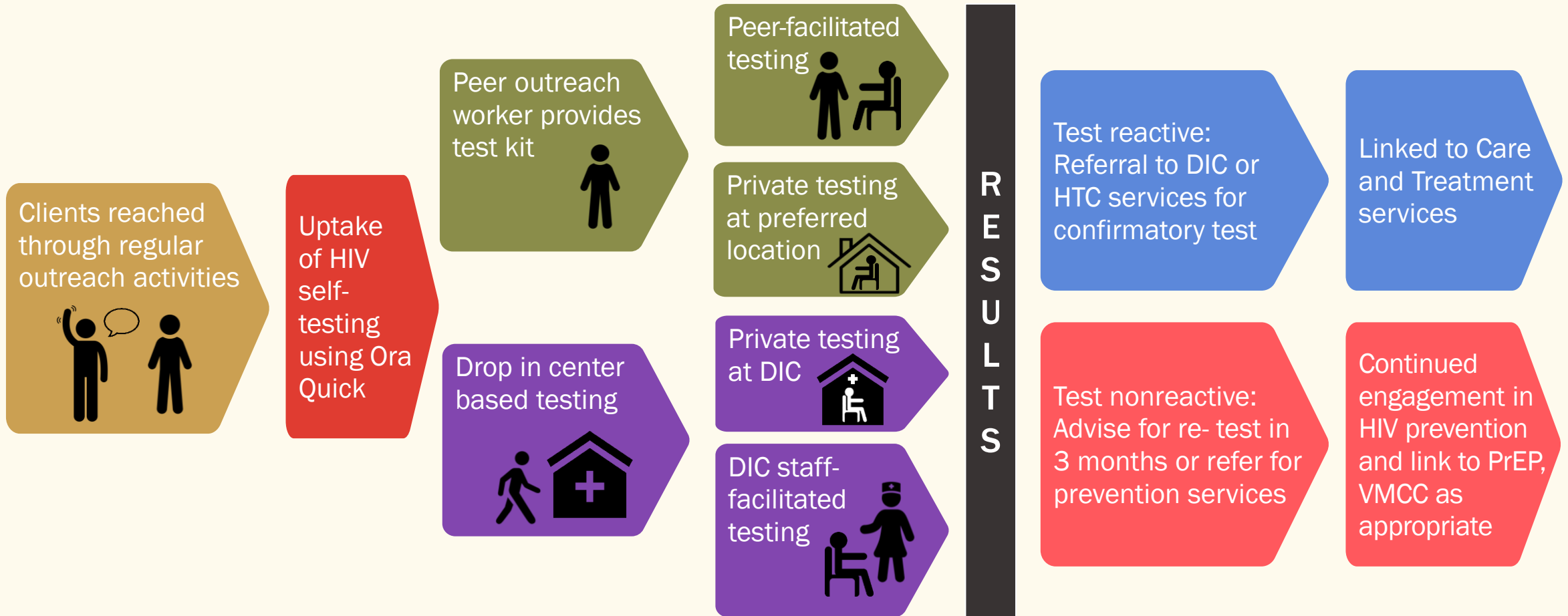


Training of HIVST implementers



Participants perform an HIVST demonstration and role play during the training session

Community approach for HIVST

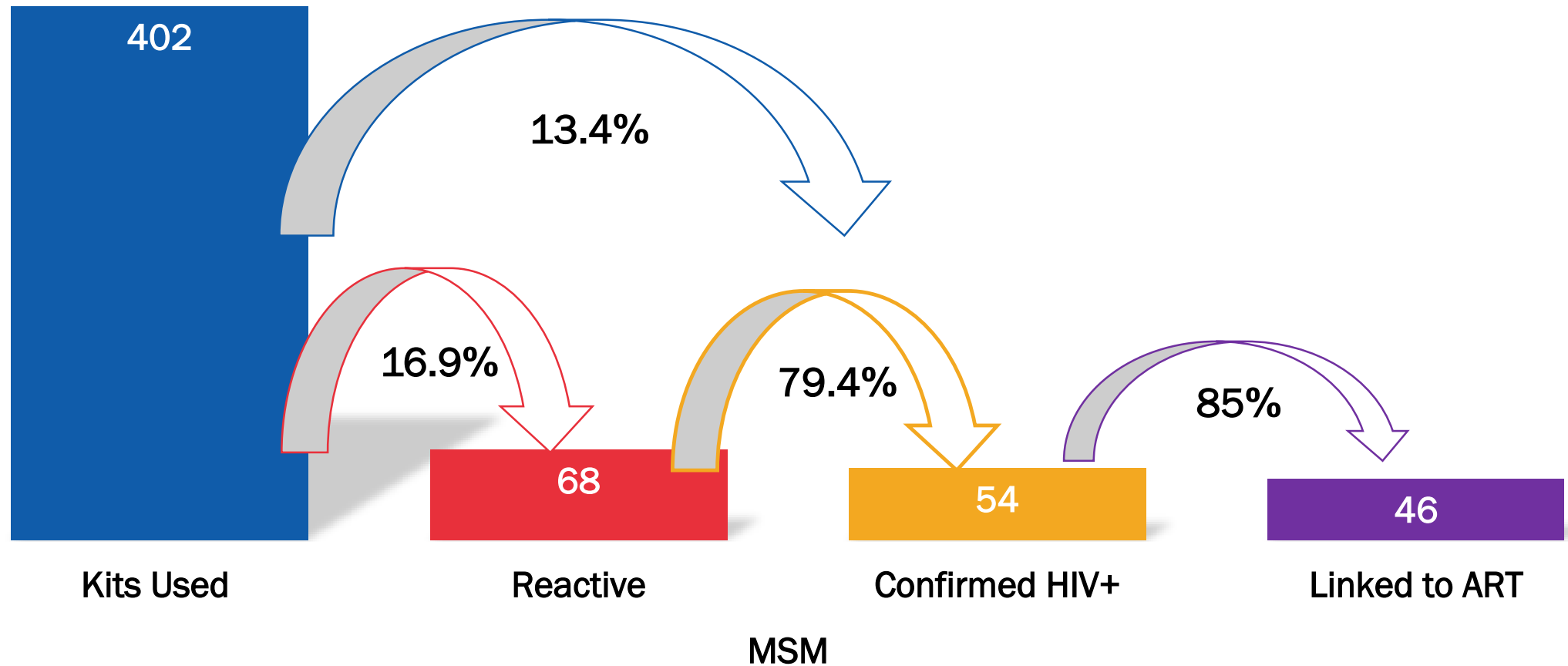


A peer assists his client with HIVST

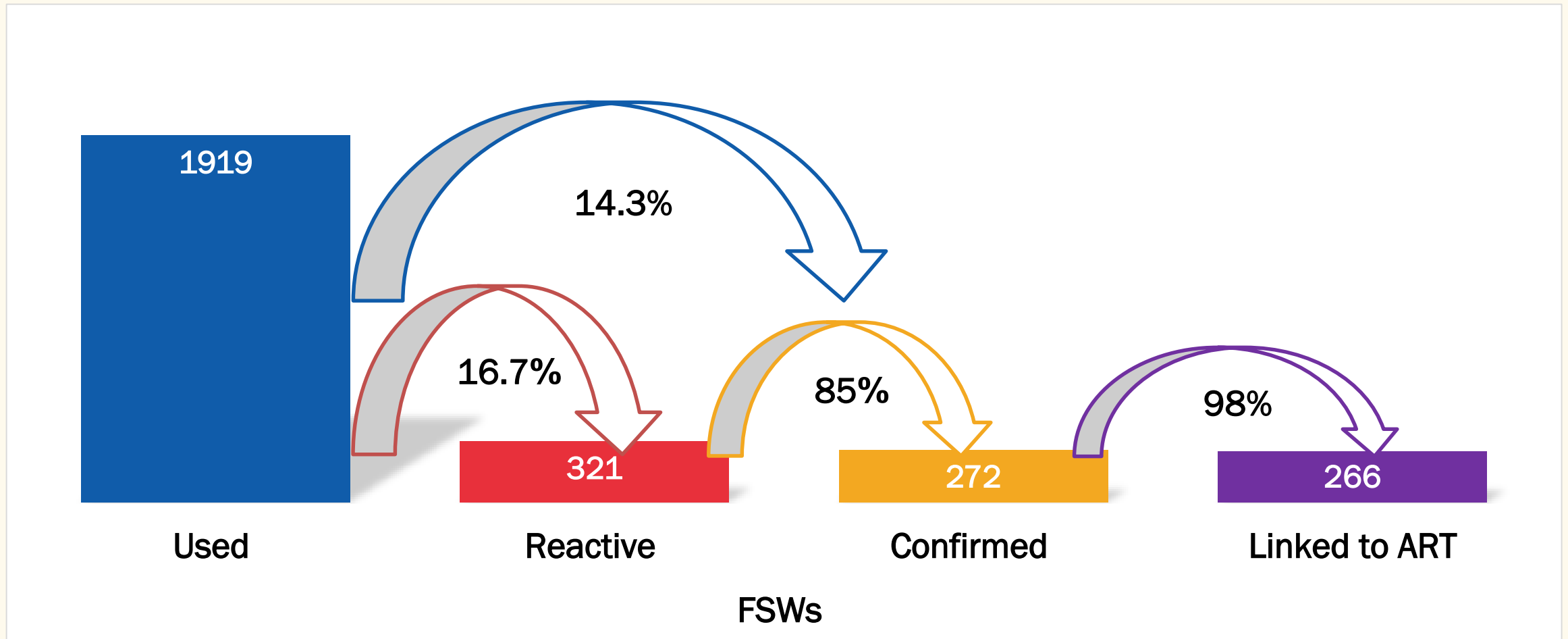


A PE explains OraQuick to his client using a pamphlet and completes the client risk assessment form

Men who have sex with men HIVST Cascade June 1, 2018 to March 31, 2019

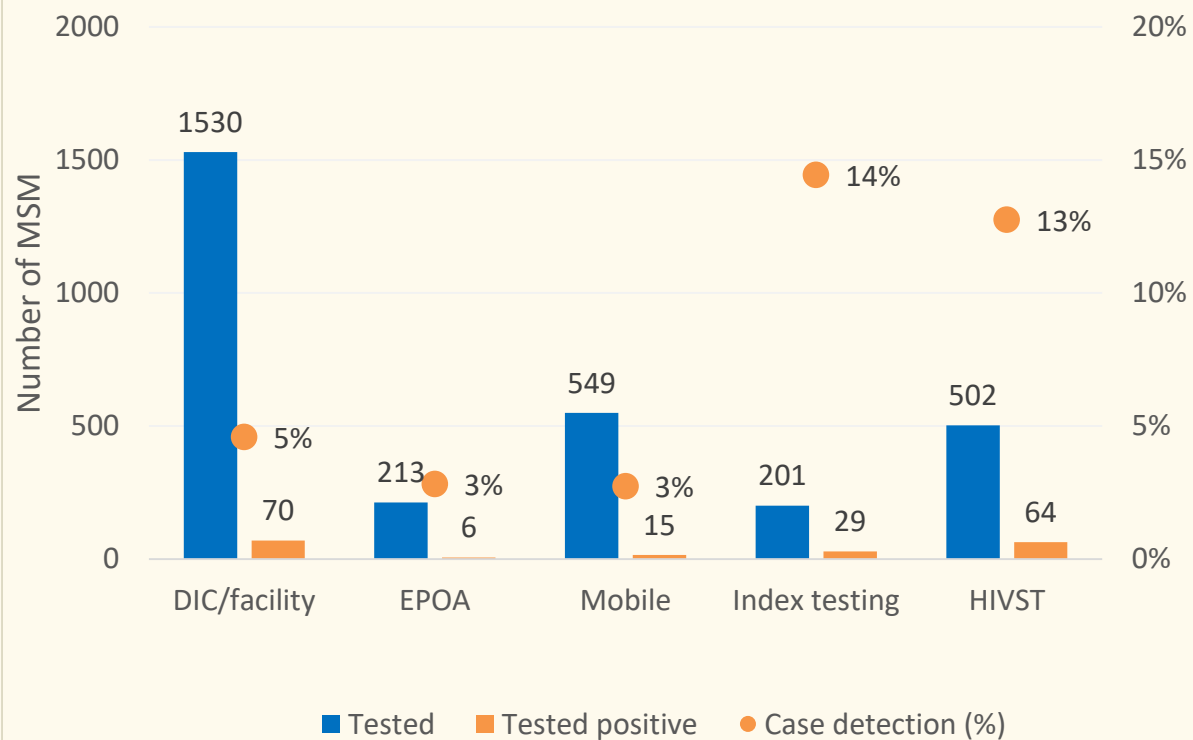


Female sex workers HIVST Cascade June 1, 2018 to March 31, 2019

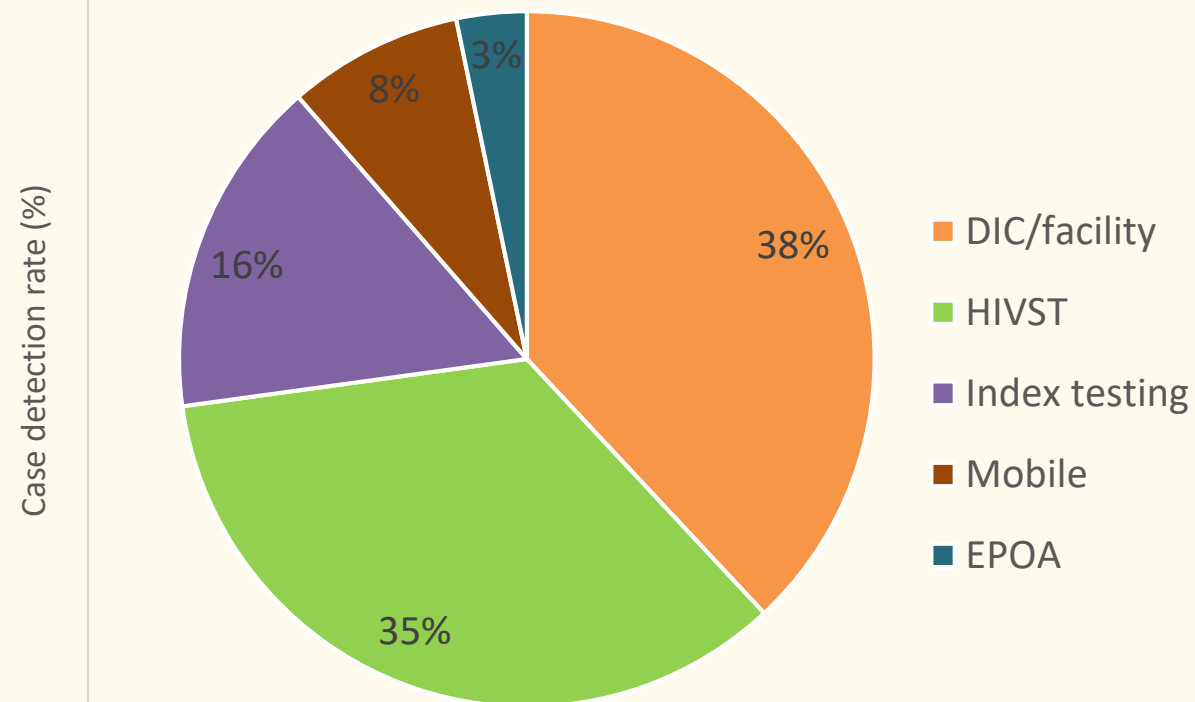


Contribution of HIVST to case-finding among MSM

MSM case-finding by HIV testing modality
(June 2018-March 2019)

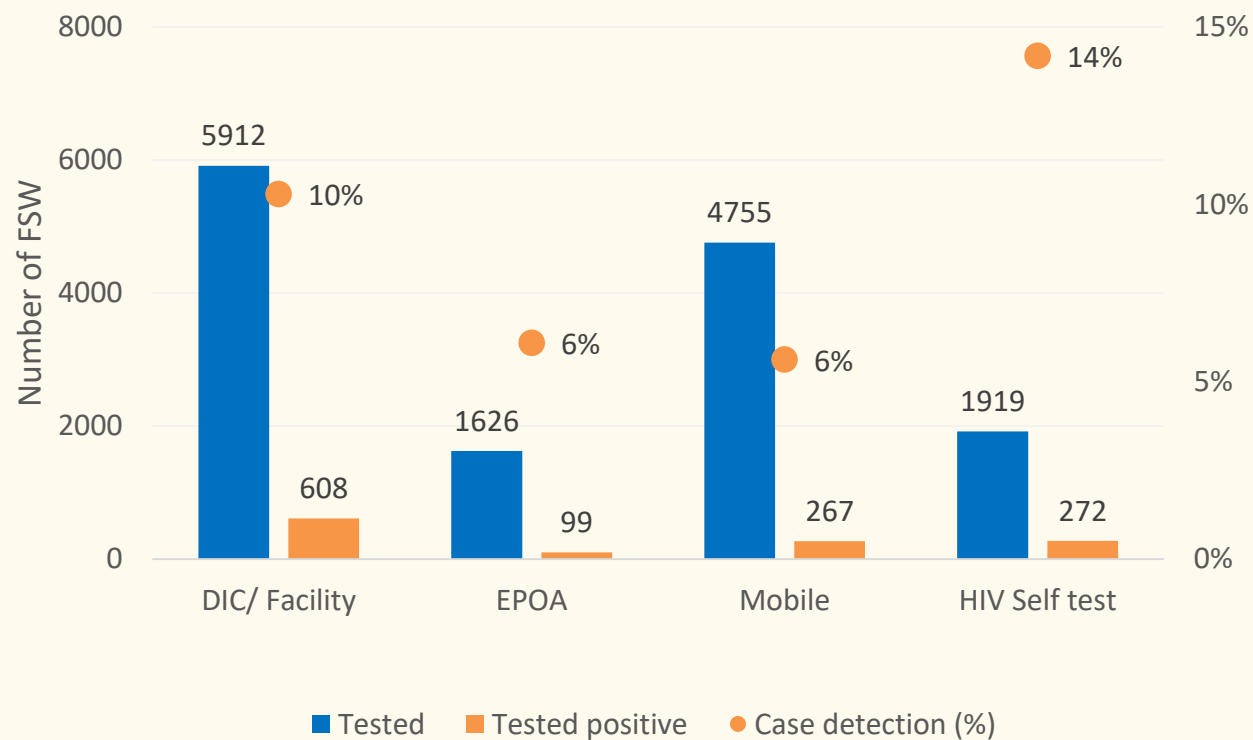


HIVST contribution to all MSM case-finding
(June 2018 to March 2019)

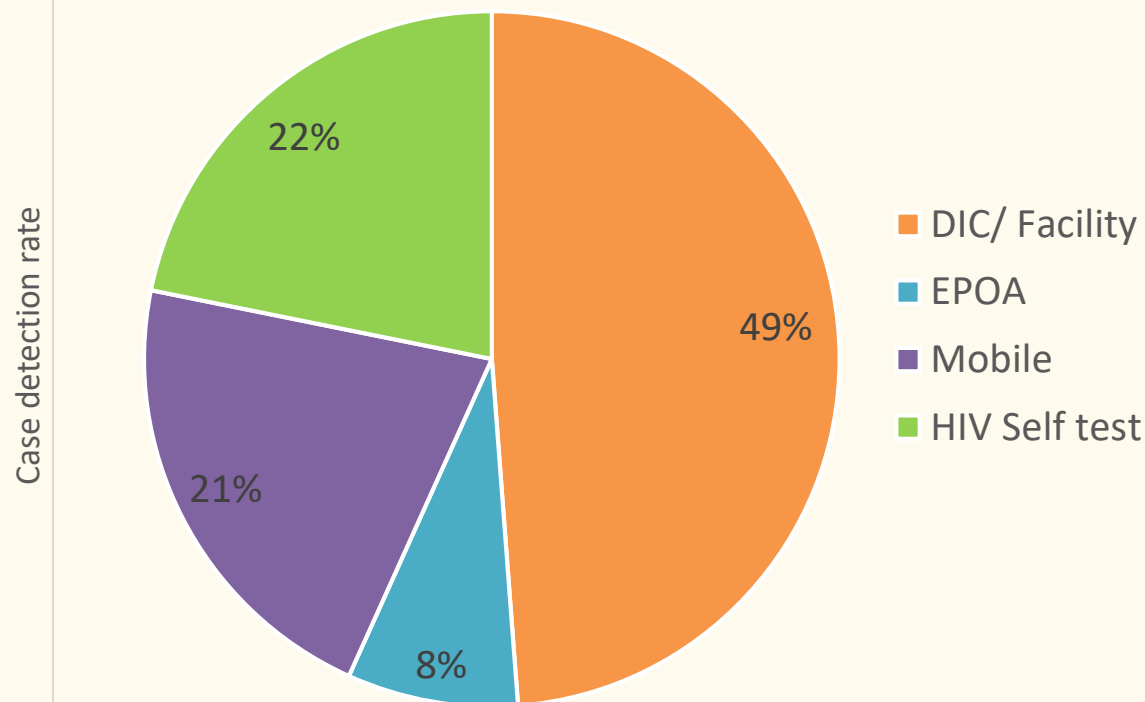


Contribution of HIVST to case-finding among FSW

FSW case-finding by HIV testing modality
(June 2018-March 2019)

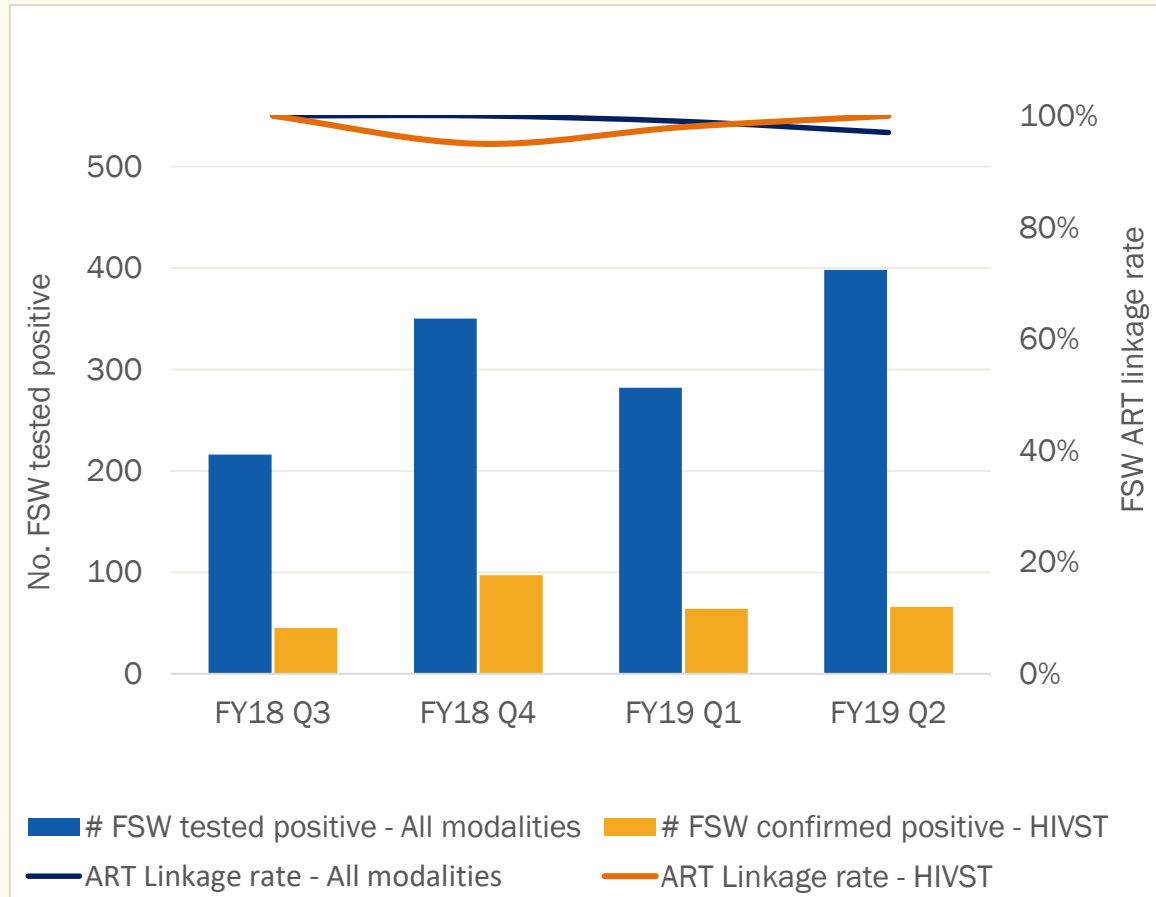


HIVST contribution to all FSW case-finding
(June 2018 to March 2019)

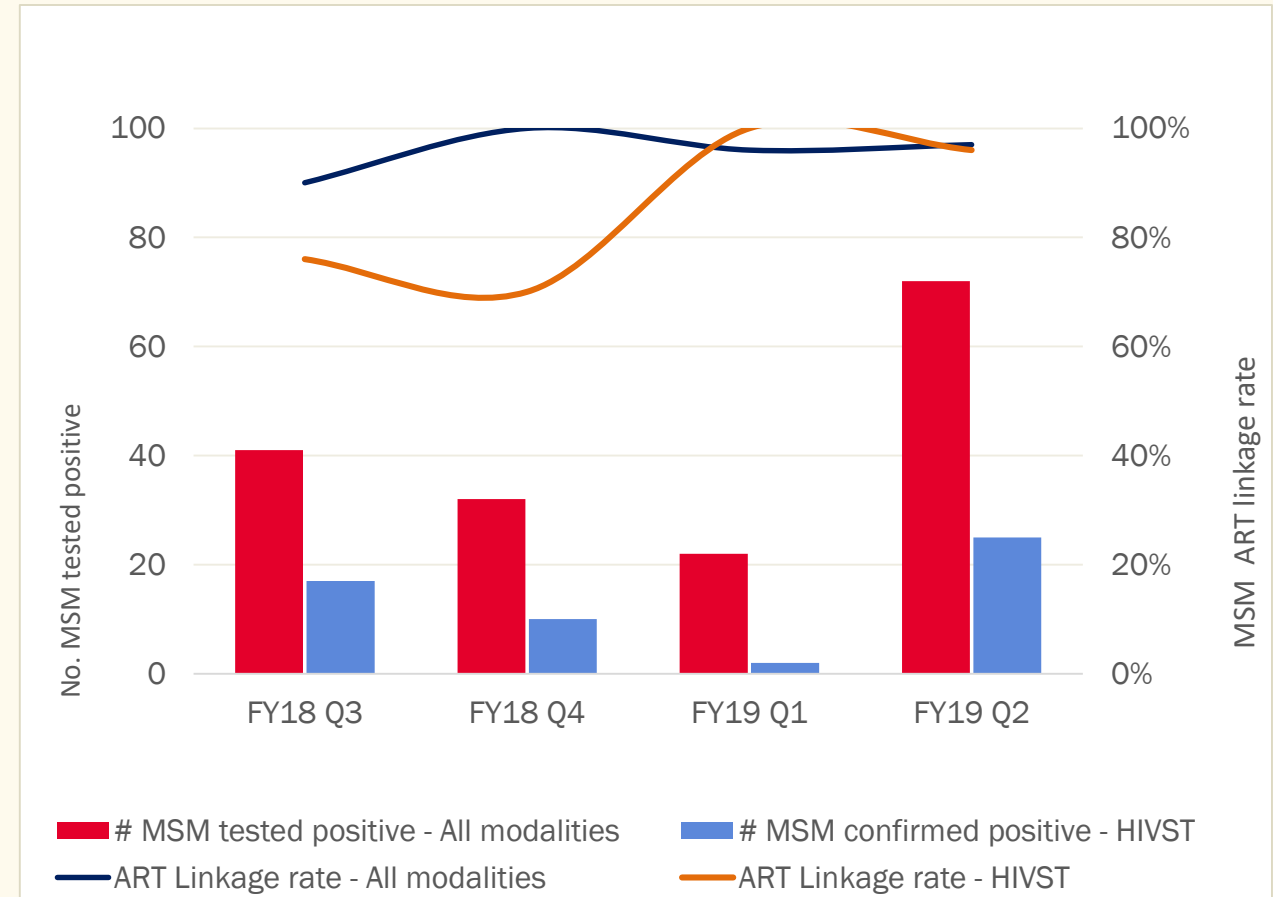


ART linkage rates, by testing modality

HIV positive and linkage among female sex workers



HIV positive and linkage among men who have sex with men



Role of key population peers in supporting ART initiation

- PEs/PNs have strong networks with treatment facilities and healthcare worker teams for treatment initiation
- When key population members are diagnosed (including with HIVST), they are immediately introduced to PN to support their engagement in HIV services
- If the individual opts-in to receive such support, the PN will be with the client every step of the way, from clinic visits to treatment initiation and adherence



Other factors contributing to success

- Implementation of “test and treat”, as recommended in Burundi’s national ART guidelines
- HCWs motivated by government-run “performance-based financing” program (funding attached to number of newly diagnosed and linked HIV clients)
- Strong collaboration between partner programmes
- Task-shifting and decentralization of ART refills



Conclusions

- Offering differentiated testing approaches, including HIVST, and linkage support to men who have sex with men and female sex workers is vital to improve access to testing and ART initiation
- PEs, PNs, counselors, and clinicians must work closely together to ensure linkage, confirmatory testing and ART initiation
- If networks are not strong, important opportunities for linking individuals to treatment can be missed

