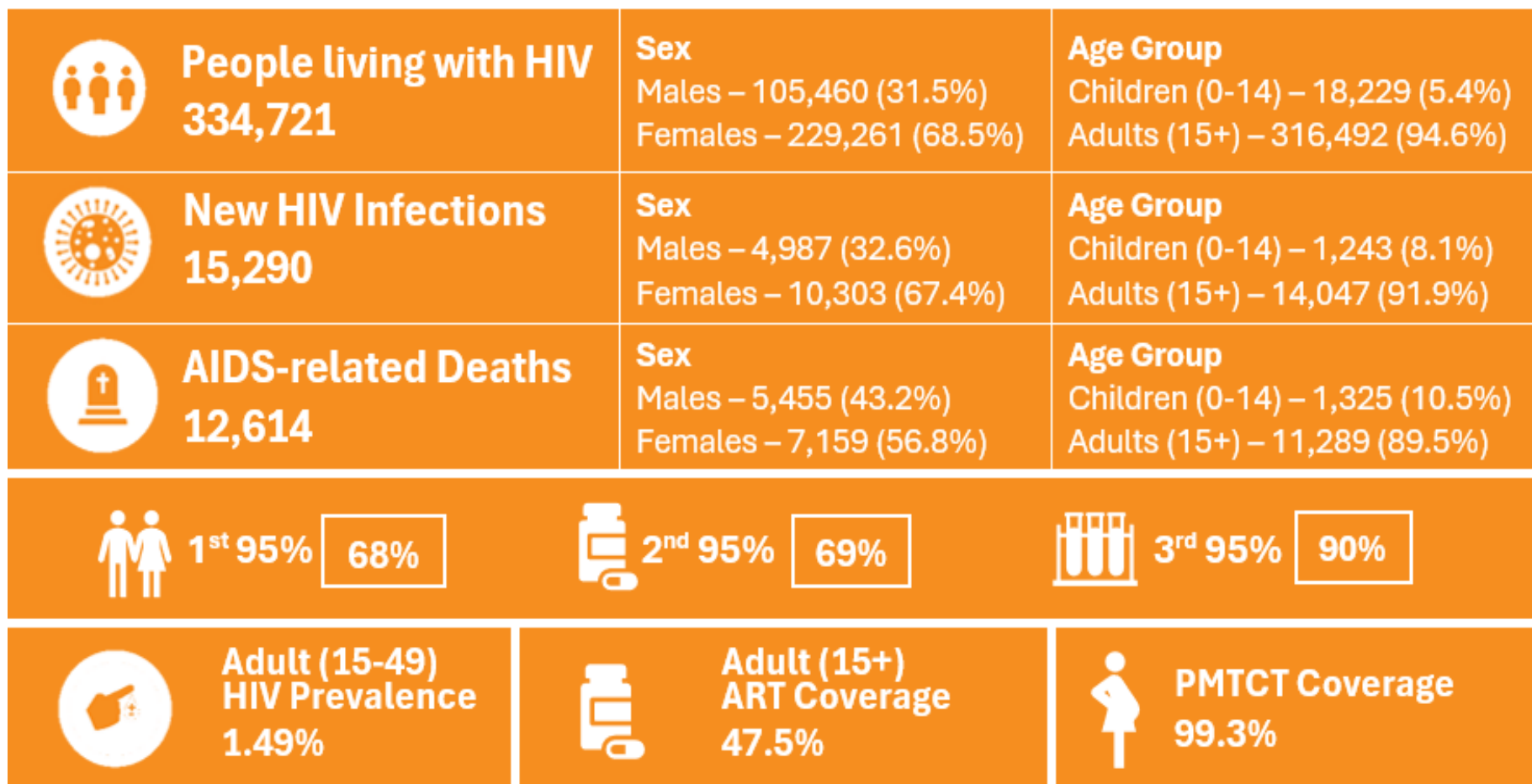


Ghana's journey to **annual** **clinical visits**

Ghana's progress to 95-95-95

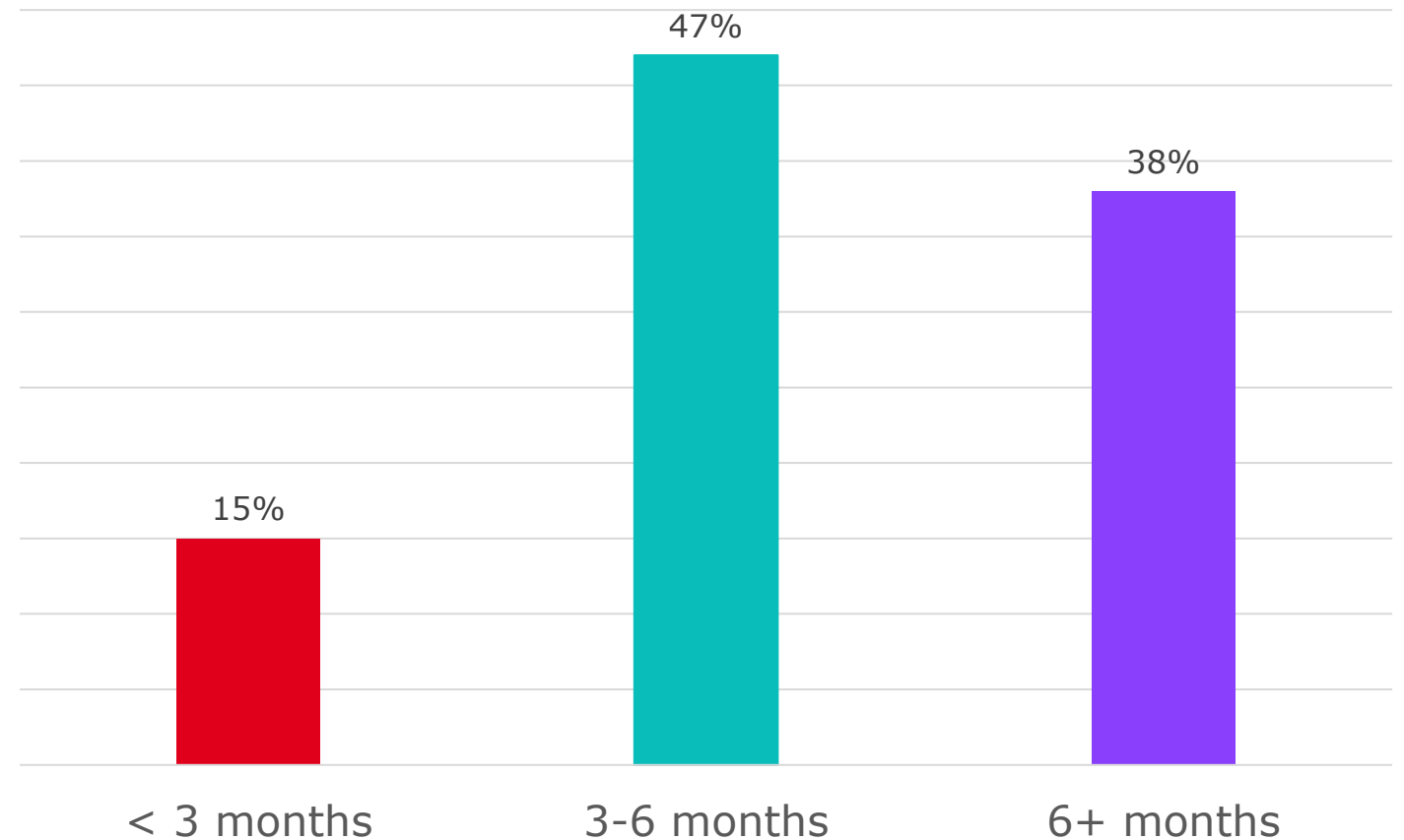


National guidelines and MMD data

National guidelines:

- Clinical visits 6-monthly
- Refill visits: 3-6 monthly

Refill duration, 2024



"Who" provides clinical and refill visits

Clinical visits:

Prescribers, nurses,
midwives,
pharmacists

Refill visits:

Nurses, midwives,
pharmacists, peers

Why move to annual clinical visits?

Health system benefits	Client benefits
<ul style="list-style-type: none">• Optimizing health workforce efficiency	<ul style="list-style-type: none">• Improved health outcomes
<ul style="list-style-type: none">• Enhancing continuity and retention in care	<ul style="list-style-type: none">• Reduced transport costs
<ul style="list-style-type: none">• Prioritizes laboratory and diagnostic capacity	<ul style="list-style-type: none">• Improved privacy and stigma reduction
<ul style="list-style-type: none">• Supports pandemic preparedness	<ul style="list-style-type: none">• Reduces the time spent out of workplace and/or away from family

Steps to guideline change:



Challenges to adopting annual clinical visits

1. **Provider concerns** about reduced clinical oversight
2. **Inadequate supply chain** and MMD support
3. **Client anxiety** about reduced contact
4. **Risk of missing co-morbidities**

Annual clinical visits will also support integration:

1. Bundled NCD screening during annual review
2. Community-based NCD monitoring
3. Synchronising ART and NCD refills

Key takeaways

Moving to annual clinical reviews:

Supports
integrated
chronic care

Builds on
existing
DSD and
MMD gains

Promotes
equity

Increases
client
autonomy
and
satisfaction

Reduces
workload in
health
facilities

Way forward

Finalize SoP for
Community
ARV model

Strengthen
eligibility and
stability criteria

Finalize
guideline for
nationwide
rollout

Build provider
capacity

Expand MMD

Pilot and phase
implementation

Strengthen
monitoring and
evaluation



International AIDS Society iasociety.org

*Thank
you*

A close-up illustration of a fountain pen nib, showing the gold-colored metal and the black barrel. The nib is positioned at the end of the word "you" in the cursive text, as if it has just finished writing it.